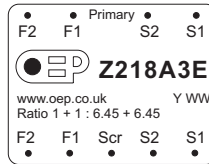
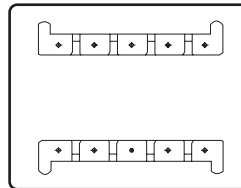
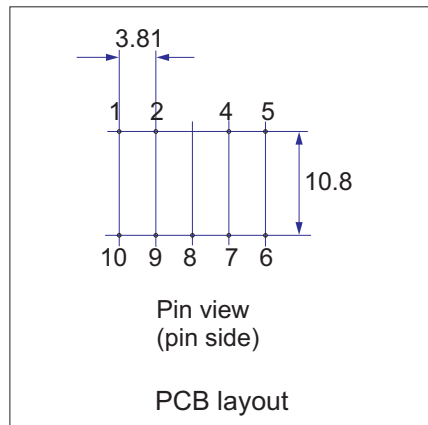
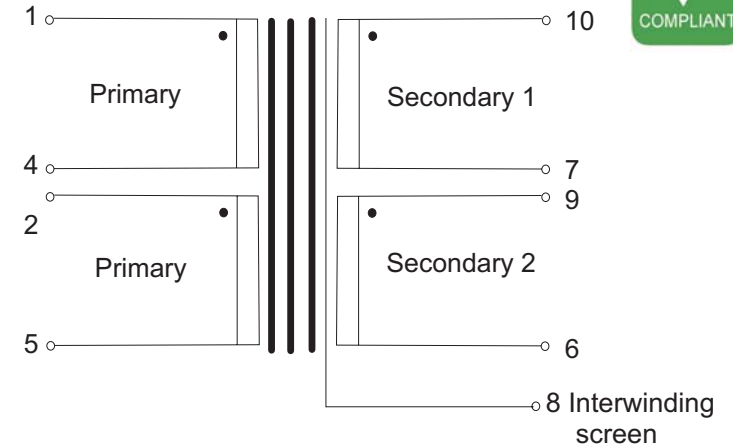
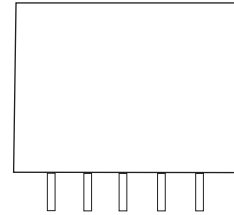
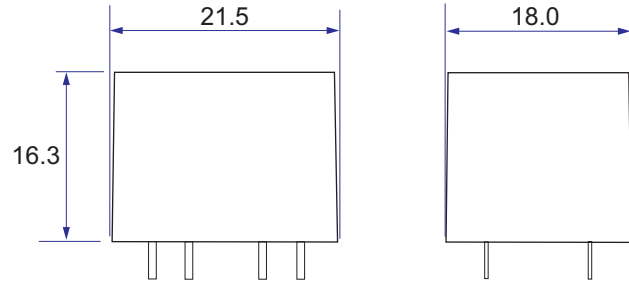


Application:

General purpose input transformer up to 0dBu



Label
Y WW = date code



Turns ratio	1 + 1 to 6.45 + 6.45		
Weight	20g		
	Min.	Typ.	Max.
Primary DC resistance (per winding)	-15%	47Ω	+15%
Secondary 1 DC resistance	-15%	1.34kΩ	+15%
Secondary 2 DC resistance	-15%	1.46kΩ	+15%
Optimal source impedance (series)	600Ω		
LF -3dB point			10Hz
HF -3dB point *	25kHz	30kHz	
30Hz max level (1% THD)	+0dBm		
THD (0dBm, 1kHz)	0.005%		0.01%
THD (0dBm, @ 30Hz)	1.0%		
Interwinding capacitance @ 10kHz	33pF		
Leakage inductance (1-5) @ 10kHz	4mH		
Operating / storage temperature range	-20°C		+85°C

Tolerance on all dimensions +/-0.2mm unless stated otherwise
Pin diameter = 0.71mm

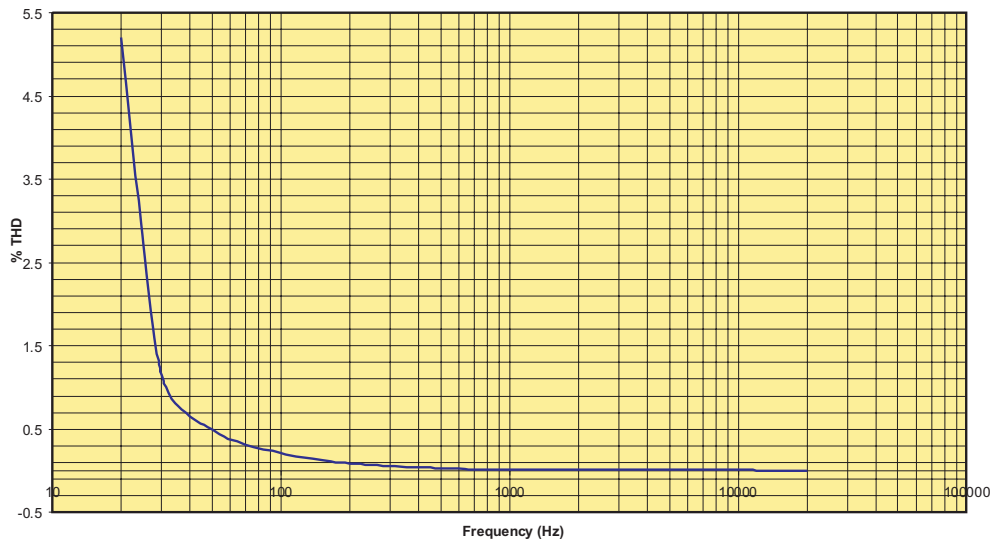
* With 600Ω source resistance, screen (pin 8) grounded.
Unused pins should be left floating with minimal pad size for best performance..



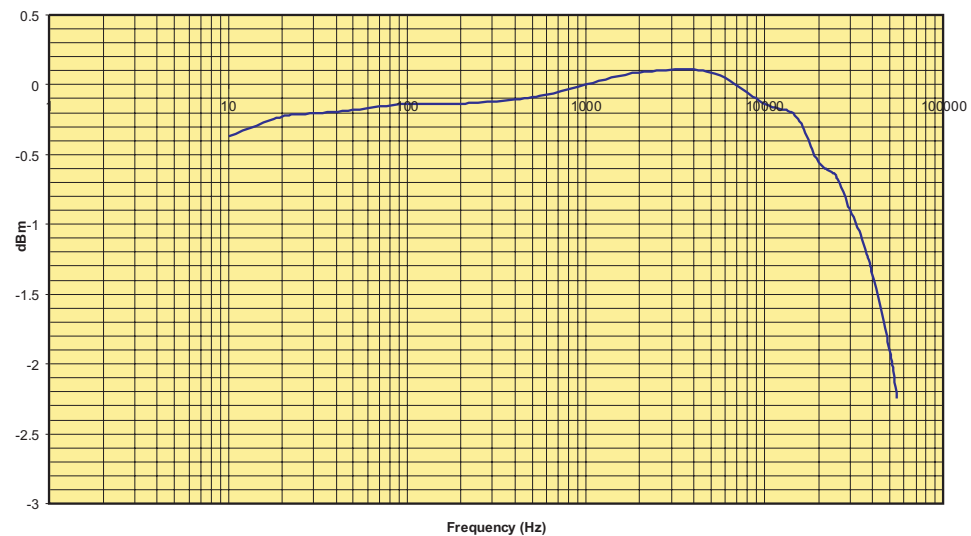
Walters Group Holdings Ltd.
Unit 5, Oxonian Park, Langford Locks,
Kidlington, Oxfordshire. OX5 1FP
Tel: (01865) 855085 Fax: (01865) 855075
Website: www.oep.co.uk

DESCRIPTION	ISSUE	DATE	DRAWN	CHECKED	DRAWING NUMBER
PCB mounting line input transformer Impedance: 150Ω/600Ω to 6.25kΩ/25kΩ page 1 of 2	1	23/07/07	CS		Z218A3E
	3	13/05/10	CS		
	4	01/07/10	CS		
	5	01/11/10	CS		
	Scale: nts	All dimensions in mm unless stated otherwise			

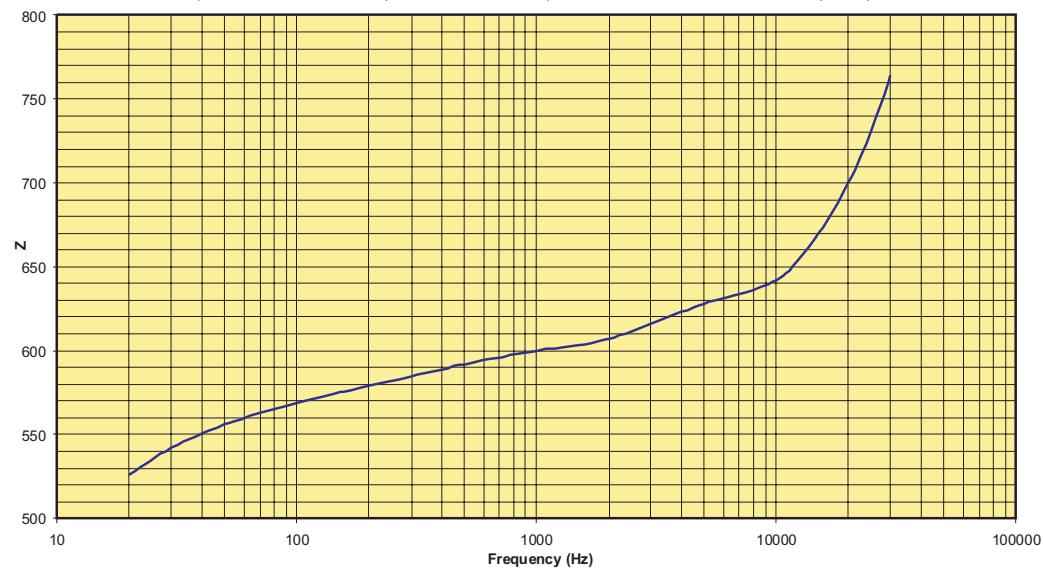
Distortion 20Hz - 20kHz, source: 0dBm, load: 4k89 ohms, primaries in series, secondaires in parallel



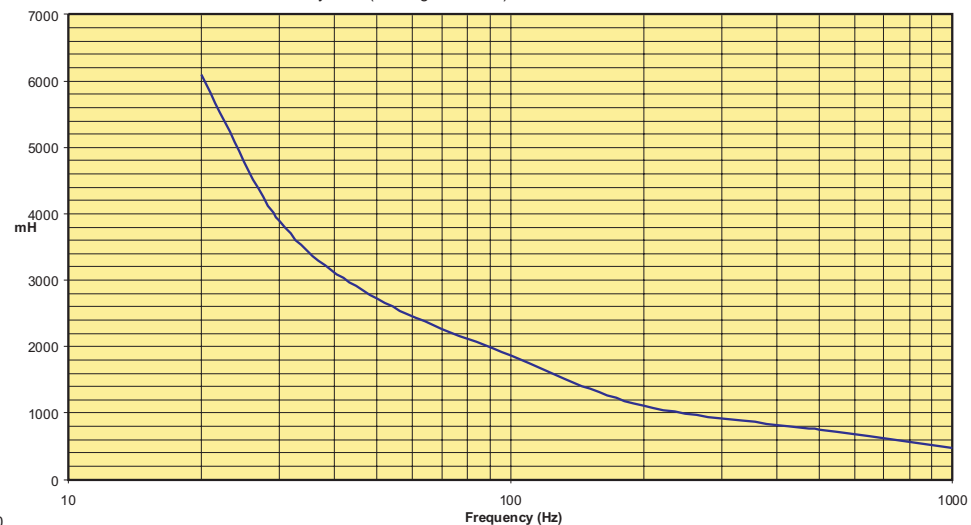
Frequency response: source: 0dBm, load: 4k89 ohms, primaries in series, secondaires in parallel



Impedance 20Hz - 30kHz (4k89 ohm load with primaries in series, secondaires in parallel)



Primary OCL (windings in series) 20Hz - 1kHz: at 0dBu



Walters Group Holdings Ltd.
 Unit 5, Oxonian Park, Langford Locks,
 Kidlington, Oxfordshire. OX5 1FP
 Tel: (01865) 855085 Fax: (01865) 855075
 Website: www.oep.co.uk

DESCRIPTION	ISSUE	DATE	DRAWN	CHECKED	DRAWING NUMBER
PCB mounting line input transformer Impedance: 150Ω/600Ω to 6.25kΩ/25kΩ page 2 of 2	1	23/07/07	CS		Z218A3E
	3	13/05/10	CS		
	4	01/07/10	CS		
	5	01/11/10	CS		
	Scale: nts	All dimensions in mm unless stated otherwise			